

PD

PANEL DOORS



Thermally insulated aluminum system designed for the design of panel doors.

SYSTEM DESCRIPTION

Thermally insulated aluminum system designed for the design of panel doors. Thanks to the use of modern technical solutions, panel doors can be not only a functional and durable entrance to the house, but also its showcase and decoration.

The system is characterized by a wide range of filling panels, available in various designs and colors. The elegant appearance of the structure and the available dimensions, the possibility of using the door in a larger building site, they give a lot of freedom in arranging the entrance to the building.

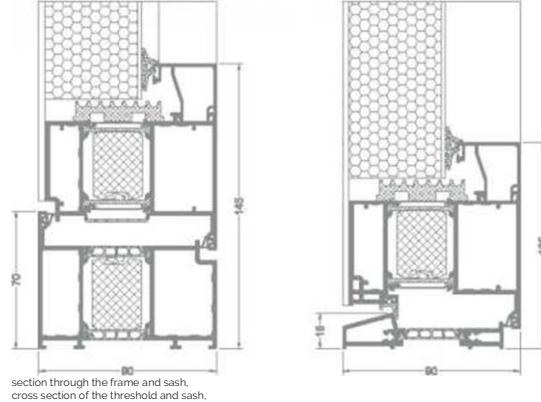
The supporting structure of the panel door system is the STAR system, which is why the door has excellent thermal insulation. This has a real impact both on the comfort prevailing inside the building and on the costs of its use.

System characteristics:

one level of the door frame and glued on the panel leaf (panel glued on the outside or on both sides)

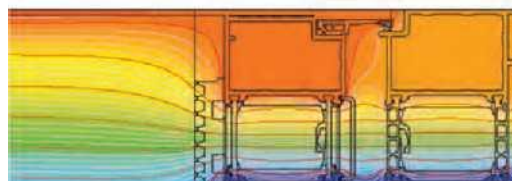
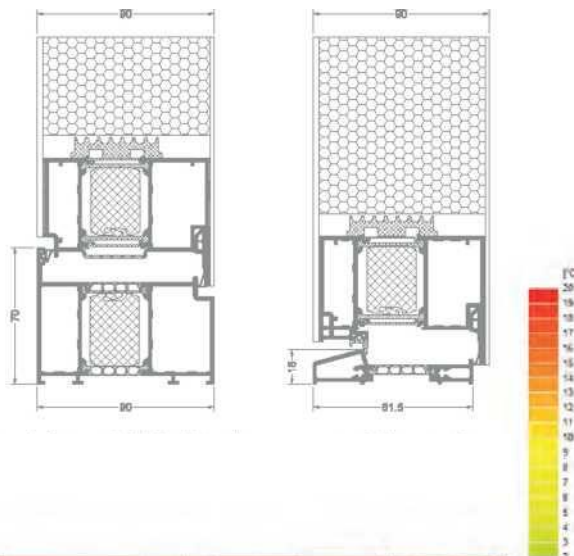
standard or self-locking 3-point locks - optional for the customer door handles, handles from the inside to choose from the standard Aliplast offer

A wide range of colors - RAL palette (Qua li coat 1518), structural colors, wood-like Aliplast Wood Color Effect (Qualideco PL-0001), anode, bicolor.



section through the frame and sash, cross section of the threshold and sash.

one-sided panel, one-sided panel, opening inwards opening inwards



PRODUCT SPECIFICATION:

SYSTEM	MATERIAL	DEPTH AND DEPTH OF FRAMES AND LEAF	THICKNESS AND FILLINGS	WINDOW TYPES	TYPES OF DOORS
PD	aluminium / poliamid	90 mm / 99 mm	One-sided panel 22-83 mm two-sided panel 90 mm		one-wing opening to the outside, opening inwards

TECHNICAL DATA

SYSTEM	THERMAL INSULATION Uf *	PERMEABILITY OF AIR	WIND WEIGHT	WATER
PD	Ud from 0.72 W / m²K for doors with dim 1200 x 2100 mm	Klasa 4; PN-EN 12207 standard	E2400; standard PN-EN 12210	7A (300 Pa); standard PN-EN 12208

* Thermal insulation depends on the combination of profile profiles and the thickness of the filling.